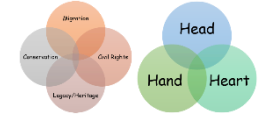




Riversdale Primary School – Pupil Knowledge Organiser



Year Group	4	Unit of Learning	Great Builders: The Ancient Egyptians 2	Subject	Design Technology
-------------------	----------	-------------------------	--	----------------	--------------------------

Sequence of Lessons

Learning Objective	What would be a suitable design for an Ancient Egyptian usekh?	Why do we need a prototype for our usekh pattern?	How do we join fabrics using different stitches?	What skills are needed to make our usekh?	What skills are needed to make our usekh?	How can we decorate our usekh appropriately?
---------------------------	--	---	--	---	---	--

Key Vocabulary

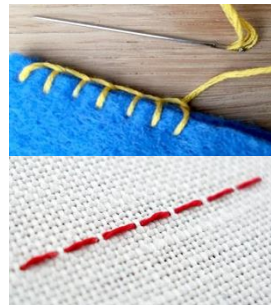
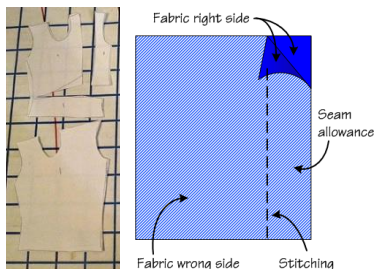
fabric
linen
textile
prototype
precision
refining
feedback
pattern
seam allowance
strengthening
stiffening

layering
stitch
running stitch
over sewing
blanket stitch
fastening
button
loop
embroidery
motif
beadwork

Key Knowledge

- Running stitch, over sewing, and blanket stitch are way of joining fabric.
- A prototype is a practice version of a design, crucial for testing/refining patterns.
- Adjusting the pattern based on prototype feedback ensures precise and consistent results.
- Cutting fabric with small, controlled cuts is vital for precision in textile work.
- Seam allowance provides space between the seam line and fabric edge for secure stitching.
- Stiffening techniques help maintain the shape and structure of textile projects.
- Using a running stitch is recommended for attaching fabric layers for strengthening and stiffening.
- Adding a button and loop is a suitable fastening technique.
- Vibrant colours like blue and gold are used in Ancient Egyptian decoration.
- Adding decorative elements such as buttons, beads, sequins, ribbons, and fabric painting enhances textile design and gives projects a unique touch.

Key Concepts



Key Assessment Questions

- What are three stitches used to join pieces of fabric together?
- What is a prototype and why is it important?
- What's the purpose of adjusting the pattern based on the prototype's feedback?
- How do we achieve precision in cutting fabric?
- What is seam allowance for?
- How do stiffening techniques contribute to the quality of textile projects?
- What stitch is recommended to attach fabric layers stiffening?
- What is a suitable fastening technique?
- What are some of the colours often used in Ancient Egyptian decoration?
- How else can you make textile more attractive and unique?